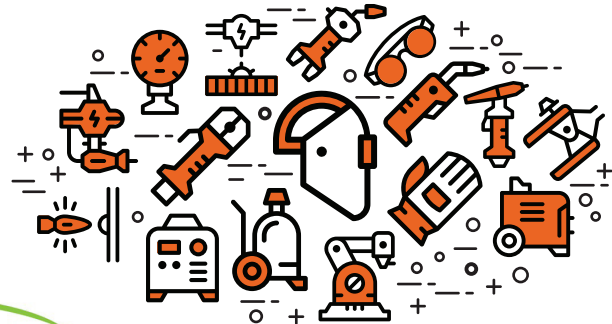


CAREER TECHNICAL EDUCATION PATHWAY: Welding Technology



Career & College Promise (CCP)

CCP provides opportunities for eligible NC high school students to take tuition-free, college courses for dual credit (some students may have to pay for textbooks and materials). Taking CCP courses accelerates completion of college certificates, diplomas, applied associate degrees that provide entry-level job skills, and associate degrees that lead to transfer within the UNC System of 4-year colleges and universities and many private institutions.



Eligibility Requirements for Career Technical Education (CTE) Pathway

- High School Junior or Senior
- Weighted GPA of 3.0 or higher, or GPA below 3.0, written approval from High School principal/designee

General Admission Requirements

- WCC Admissions Application
- High School Transcript
- Registration and Verification Form

About the Welding Technology Pathway:

This pathway is a set of courses that students can take to earn a certificate toward the Welding Technology Diploma. These courses prepare students to work in the welding and metal industry as entry level technicians.

You will learn:

- Consumable and non-consumable electrode welding and cutting processes

Possible Job Titles:

- Welding and metal working technicians
- Fabricator
- Sales, quality control for business and industry

Possible Employment Opportunities:

- Construction companies
- Manufacturing industries
- Welding-related self-employment

Annual Median Salary for Welders, Cutters, Solderers, and Brazers (NC)

onetonline.org **\$38,820**

Welding Technology Certificate			
Title	Class	Lab	Credit
WLD 110 Cutting Processes	1	3	2
WLD 115 SMAW (Stick) Plate	2	9	5
WLD 121 GMAW (MIG) FCAW/Plate	2	6	4
WLD 131 GTAW (TIG) Plate	2	6	4
Total Semester Credit Hours:			15

For more information, contact: **Trish Holsten, Secondary Partnerships Director**
(252) 246-1250 • pholsten@wilsoncc.edu
wilsoncc.edu/curriculum/career-college-promise

wilsoncc.edu | (252) 291-1195 | 902 Herring Avenue, P.O. Box 4305 Wilson, NC 27893