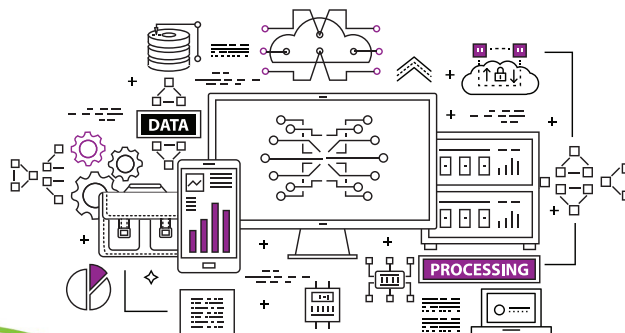


# CAREER TECHNICAL EDUCATION PATHWAY: Information Technology



## Career & College Promise (CCP)

CCP provides opportunities for eligible NC high school students to take tuition-free, college courses for dual credit (some students may have to pay for textbooks and materials). Taking CCP courses accelerates completion of college certificates, diplomas, applied associate degrees that provide entry-level job skills, and associate degrees that lead to transfer within the UNC System of 4-year colleges and universities and many private institutions.



## Eligibility Requirements for Career Technical Education (CTE) Pathway

- High School Junior or Senior
- Weighted GPA of 3.0 or higher, or GPA below 3.0, written approval from High School principal/designee

## General Admission Requirements

- WCC Admissions Application
- High School Transcript
- Registration and Verification Form

## About the Information Technology Pathway:

This pathway is a set of courses that students can take to earn a certificate toward the Information Technology Associate of Applied Science Degree. These courses prepare students for computer software and/or hardware to design, process, implement and manage information systems in specialties such as database services, security, business intelligence, healthcare informatics and others depending on the technical path selected within this curriculum.

### You will learn:

- Creating, storing, communicating & exchanging information to solve technical issues
- Programming Computers
- Software development

- Troubleshooting PC hardware and software issues
- Maintain and secure computers and networking systems, email and websites

### Possible Job Titles:

- Information Technology (IT) Support Technician
- Help Desk Analyst • System Administrator

### Possible Employment Opportunities:

- Any business/industry or system that relies on computer systems
- Consultant for consumers' personal home computers

## Annual Median Salary for Computer User Support Specialist (NC)

onetonline.org **\$47,970**

| Information Technology Certificate                      |       |     |           |
|---|-------|-----|-----------|
| Title   | Class | Lab | Credit    |
| CIS 110 Introduction to Computers                       | 2     | 2   | 3         |
| CTI 150 Mobile Computing Devices                        | 2     | 2   | 3         |
| CTS 120 Hardware/Software Support                       | 2     | 3   | 3         |
| CTS 220 Adv. Hardware/Software Support (prereq CTS 120) | 2     | 3   | 3         |
| NOS 130 Windows Single User                             | 2     | 2   | 3         |
| <b>Total Semester Credit Hours:</b>                     |       |     | <b>15</b> |

For more information, contact: **Trish Holsten, Secondary Partnerships Director**  
(252) 246-1250 • pholsten@wilsoncc.edu  
wilsoncc.edu/curriculum/career-college-promise

wilsoncc.edu | (252) 291-1195 | 902 Herring Avenue, P.O. Box 4305 Wilson, NC 27893