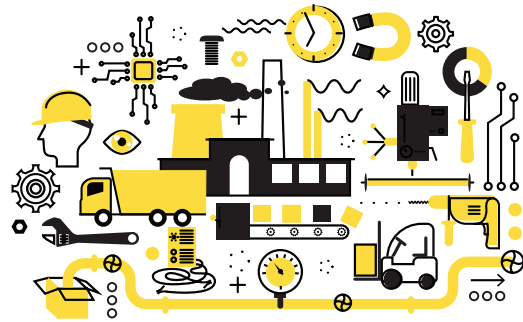


# CAREER TECHNICAL EDUCATION PATHWAY: Applied Engineering (Manufacturing) (C40130C)



## Career & College Promise (CCP)

CCP provides opportunities for eligible NC high school students to take tuition-free college courses for dual credit (some students may have to pay for textbooks and materials). Taking CCP courses accelerates completion of college certificates, diplomas, applied associate degrees that provide entry-level job skills, and associate degrees that lead to transfer within the UNC System of 4-year colleges and universities and many private institutions.



## Applied Engineering (Manufacturing) Pathway

### Eligibility Requirements

- High School Junior or Senior
- Unweighted GPA of 2.8 or higher **OR** demonstrate college readiness in English, reading and math on approved assessments.
- If GPA is below 2.8, principles/designees can waive the GPA and provide rationale why GPA was waived.

## About the Applied Engineering Pathway (Manufacturing):

This pathway is a set of courses that students can take to earn a certificate toward the Associate of Applied Science Applied Engineering Degree. These courses prepare students to use basic engineering principles and technical skills to solve technical problems in various types of industry.

### You will learn:

- Adjusting, calibrating and repairing equipment for various businesses and industries
- Plant maintenance

**Annual Median Wage for NC Mechanical Engineering Technicians \$53,480**

NCCareers.org

## General Admission Requirements

- College CCP Admissions Application
- High School Transcript
- Registration and Verification Form



## Possible Job Titles:

- Industrial Maintenance Technicians
- Industrial Machinery Repair Technician
- Control Technicians

## Possible Employment Opportunities:

- Industrial Plant Manufacturing Company
- Commercial Business

Applied Engineering (Manufacturing) Certificate			
Title	Class	Lab	Credit
ELC 117 Motors and Controls	2	6	4
ELC 125 Diagrams and Schematics	1	2	2
HYD 110 Hyd./Pneumatics I	2	3	3
ELC 128 Intro to PLC	2	3	3
ISC 112 Industrial Safety	2	0	2
<b>Total Semester Credit Hours:</b>			<b>14</b>

For more information, contact: **Trish Holsten, Secondary Partnerships Director**  
(252) 246-1250 • pholsten@wilsoncc.edu  
www.wilsoncc.edu/ccp

wilsoncc.edu | (252) 291-1195 | 902 Herring Avenue, P.O. Box 4305 Wilson, NC 27893

# CONNECTING HIGH SCHOOL, COLLEGE, AND CAREER

