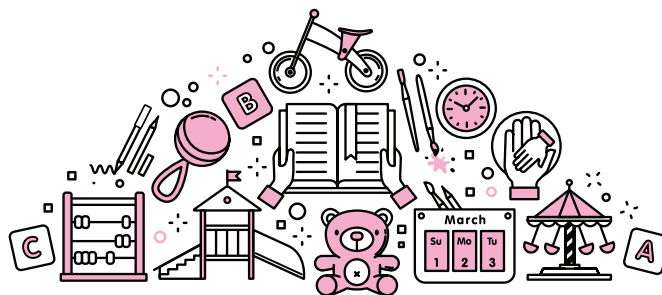


# CAREER TECHNICAL EDUCATION PATHWAY: Early Childhood Education (C55220C)



## Career & College Promise (CCP)

CCP provides opportunities for eligible NC high school students to take tuition-free college courses for dual credit (some students may have to pay for textbooks and materials). Taking CCP courses accelerates completion of college certificates, diplomas, applied associate degrees that provide entry-level job skills, and associate degrees that lead to transfer within the UNC System of 4-year colleges and universities and many private institutions.



## Early Childhood Education Pathway

### Eligibility Requirements

- High School Junior or Senior
- Unweighted GPA of 2.8 or higher **OR** demonstrate college readiness in English, reading and math on approved assessments.
- If GPA is below 2.8, principals/designees can waive the GPA and provide rationale why GPA was waived.

## General Admission Requirements

- College CCP Admissions Application
- High School Transcript
- Registration and Verification Form



## About the Early Childhood Pathway:

This pathway is a set of courses that students can take to earn a certificate toward the Associate of Applied Science Early Childhood Education Degree. These courses prepare students to work with children from birth through eight, often under the supervision of qualified teachers. Students who continue to pursue an AAS degree have three options: a career-ready track AAS degree (no plan to pursue a 4-year degree); a transfer-option AAS degree that allows students who finish the degree to pursue a 4-year degree at a senior institution that offers a B-K program (to become licensed teachers and teach through kindergarten in NC public schools); and a transfer-option AAS degree that allows students to pursue a 4-year degree at a senior institution that offers an Early Childhood Education Program (for students interested in working with children, but not in the classroom).

## You will learn:

- Child growth and development, needs, care and guidance, and communication skills.

## Possible Job Titles:

- Teacher Assistants
- Preschool Teacher
- Child Care Worker
- Child Care Director/Administrator

## Possible Employment Opportunities:

- Daycares & Child Development Centers
- Preschools
- Public & Private Schools
- Head Start Programs

**Annual Median Wage for NC Preschool Teachers (not special education)**

NCCareers.org **\$26,330**

### Early Childhood Education Certificate

Title	Class	Lab	Credit
EDU 119 Early Childhood Education	4	0	4
EDU 131 Child, Family, Comm.	3	0	3
EDU 145 Child Development II	3	0	3
EDU 146 Child Guidance	3	0	3
EDU 153 Health, Safety & Nut.	3	0	3
<b>Total Semester Credit Hours:</b>			<b>16</b>

For more information, contact: **Trish Holsten, Secondary Partnerships Director**  
(252) 246-1250 • pholsten@wilsoncc.edu  
www.wilsoncc.edu/ccp

wilsoncc.edu | (252) 291-1195 | 902 Herring Avenue, P.O. Box 4305 Wilson, NC 27893

# CONNECTING HIGH SCHOOL, COLLEGE, AND CAREER

