

CAREER TECHNICAL EDUCATION PATHWAY: Interpreter Education - American Sign Language (C55300C)



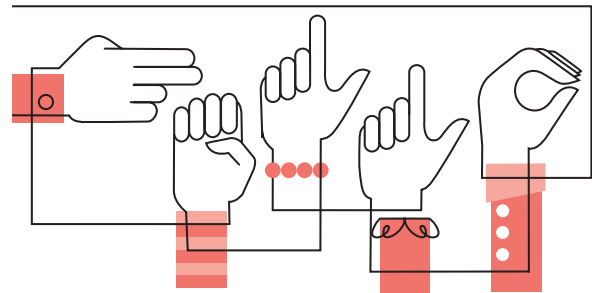
Career & College Promise (CCP)

CCP provides opportunities for eligible NC high school students to take tuition-free college courses for dual credit (some students may have to pay for textbooks and materials). Taking CCP courses accelerates completion of college certificates, diplomas, applied associate degrees that provide entry-level job skills, and associate degrees that lead to transfer within the UNC System of 4-year colleges and universities and many private institutions.

Interpreter Education Pathway

Eligibility Requirements

- High School Junior or Senior
- Unweighted GPA of 2.8 or higher **OR** demonstrate college readiness in English, reading and math on approved assessments.
- If GPA is below 2.8, principles/designees can waive the GPA and provide rationale why GPA was waived.



General Admission Requirements

- College CCP Admissions Application
- High School Transcript
- Registration and Verification Form



About the Interpreter Education Pathway:

This pathway is a set of courses that students can take to earn a certificate toward the Associate of Applied Science- Interpreter Education Degree. These courses prepare students to work as entry-level Sign Language interpreters who will provide communication access in interview and interactive settings.

You will learn:

- American Sign Language (ASL) grammar, structure, and sociolinguistic properties
- Cognitive processes with interpretation between ASL and English
- The structure and character of the deaf community
- Acquisition of consecutive and simultaneous interpreting skills

Possible Job Titles:

- Paraprofessional Interpreters in educational and other community settings
- Freelance or self-employed interpreter for human service related areas

Possible Employment Opportunities:

- Interpreter in educational, government, health-care settings and other community settings

**Median Annual Wage for
NC Interpreters & Translators**

NCCareers.org **\$41,660**

Interpreter Education Certificate			
Title	Class	Lab	Credit
ASL 111 Elementary Amer. Sign Lang. I	3	0	3
ASL 112 Elementary Amer. Sign Lang. II (PreReq ASL I)	3	0	3
ASL 151 Numbers and Fingerspelling (PreReq ASL I)	2	0	1
ASL 211 Intermediate Amer. Sign Lang. I (PreReq ASL 112)	3	0	3
IPP 112 Comparative Cultures	3	0	3
Total Semester Credit Hours for Certificate:			13

*Students must earn a grade of "c" or higher on all required content area courses (ASL and IPP courses) or on any prerequisite course before taking the next level course.

For more information, contact: **Trish Holsten, Secondary Partnerships Director**
(252) 246-1250 • pholsten@wilsoncc.edu
www.wilsoncc.edu/ccp

wilsoncc.edu | (252) 291-1195 | 902 Herring Avenue, P.O. Box 4305 Wilson, NC 27893

CONNECTING HIGH SCHOOL, COLLEGE, AND CAREER

