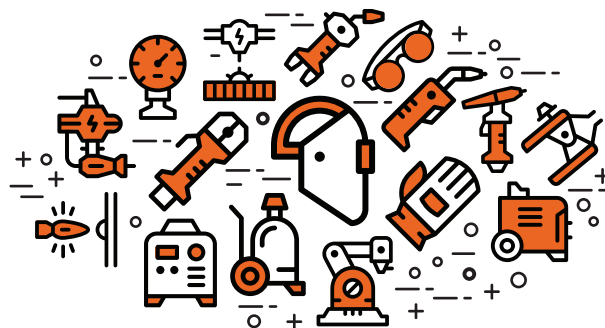


CAREER TECHNICAL EDUCATION PATHWAY: Welding Technology (C50420C)



Career & College Promise (CCP)

CCP provides opportunities for eligible NC high school students to take tuition-free college courses for dual credit (some students may have to pay for textbooks and materials). Taking CCP courses accelerates completion of college certificates, diplomas, applied associate degrees that provide entry-level job skills, and associate degrees that lead to transfer within the UNC System of 4-year colleges and universities and many private institutions.



Welding Technology Pathway

Eligibility Requirements

- High School Junior or Senior
- Unweighted GPA of 2.8 or higher **OR** demonstrate college readiness in English, reading and math on approved assessments.
- If GPA is below 2.8, principles/designees can waive the GPA and provide rationale why GPA was waived.

General Admission Requirements

- College CCP Admissions Application
- High School Transcript
- Registration and Verification Form



About the Welding Technology Pathway:

This pathway is a set of courses that students can take to earn a certificate toward the Welding Technology Diploma. These courses prepare students to work in the welding and metal industry as entry level technicians.

You will learn:

- Consumable and non-consumable electrode welding and cutting processes

Possible Job Titles:

- Welding and metal working technicians
- Fabricator
- Sales, quality control for business and industry

Possible Employment Opportunities:

- Construction companies
- Manufacturing industries
- Welding-related self-employment

**Annual Median Salary for Welders,
Cutters, Solderers, and Brazers (NC)**

oneline.org **\$38,820**

Welding Technology Certificate			
Title	Class	Lab	Credit
WLD 110 Cutting Processes	1	3	2
WLD 115 SMAW (Stick) Plate	2	9	5
WLD 121 GMAW (MIG) FCAW/Plate	2	6	4
ISC 112 Industrial Safety	2	0	2
Total Semester Credit Hours:			13

For more information, contact: **Trish Holsten, Secondary Partnerships Director**
(252) 246-1250 • pholsten@wilsoncc.edu
www.wilsoncc.edu/ccp

wilsoncc.edu | (252) 291-1195 | 902 Herring Avenue, P.O. Box 4305 Wilson, NC 27893

CONNECTING HIGH SCHOOL, COLLEGE, AND CAREER

