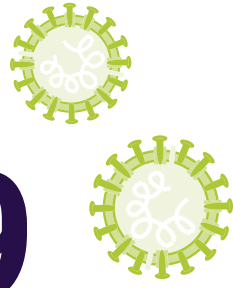


SYMPTOMS OF COVID-19



WILSON
COMMUNITY
COLLEGE



If you are experiencing any of these symptoms, please report to your instructor, Student Development (F-100), and/or the Health Department.

COVID-19 affects different people in different ways. Infected people have had a wide range of symptoms reported – from mild symptoms to severe illness. Symptoms may appear **2-14 days after exposure to the virus**. People with these symptoms may have COVID-19:



FEVER OR CHILLS



COUGH



SHORTNESS OF BREATH OR DIFFICULTY BREATHING



FATIGUE



MUSCLE OR BODY ACHES



HEADACHE



NEW LOSS OF TASTE OR SMELL



SORE THROAT



CONGESTION OR RUNNY NOSE



NAUSEA, VOMITING, OR DIARRHEA



For more information: www.cdc.gov/COVID19-symptoms

